

ALEXON

Since 1982

Alexon Electrical Products Ltd. (Hong Kong)

email: sales@alexon.com.hk
<http://www.alexon.com.hk>
Electrical Appliances

Danson Housewares Ltd. (Hong Kong)

email: sales@danson.com.hk
<http://www.danson.com.hk>
Housewares

Ningbo Alexon Electrical Products Ltd.

email: sales@alexonchina.com
<http://www.alexonchina.com>
Kitchenwares & Housewares

Shenzhen Danson Housewares Ltd.

email: sales@dansonchina.com
<http://www.dansonchina.com>
Healthcares & Beautycares

Ningbo Premier Electric Co. Ltd.

Seimen - Yuyao, Ningbo, China
Manufacturer of Consumer Electrical Products
& OEM development

Golden Profit Electrical Manufactory

Huizhou, China
Manufacturer of Electrical & Electronics Products



RoHS



since 1982

GLASS WATER KETTLE



**MODEL NO.: AX-6302GTYK
DIGITAL GLASS WATER KETTLE**

Specification:
 - AC220-240V 50Hz 1850-2200W
 - Capacity: 1.7L
 - Concealed S/S heating element
 - Smart temperature control for 70 ~ 100°C
 - Keep warm function at 70, 80, 90°C for 1 hour

Packing details:
 4pcs/ctn
 2,116pcs/20GP FCL
 4,400pcs/40GP FCL
 5,132pcs/40HQ FCL
Certificate: CE/GS/ROHS



**MODEL NO.: AX-6302GEYK
DIGITAL GLASS WATER KETTLE**

Specification:
 - 220-240V 50Hz 1850-2200W
 - Capacity: 1.7L
 - Digital control on handle
 - colorful illumination light when switch on
 - Smart temperature control for 70 ~ 100°C
 - Keep warm function at 70, 80, 90°C for 1 hour

Packing details:
 4pcs/ctn
 2,436pcs/20GP FCL
 5,048pcs/40GP FCL
 5,916pcs/40HQ FCL
Certificate: CE/GS/ROHS



**MODEL NO.: AX-1302EKK
DIGITAL GLASS WATER KETTLE**

Specification:
 - AC220-240V 50Hz 1850-2200W
 - Capacity: 2.0L
 - Digital control on handle
 - Concealed S/S heating element
 - red illumination light when switch on
 - Keep warm function: 50 ~ 90°C

Packing details:
 6pcs/ctn
 2,580pcs/20GP FCL
 5,800pcs/40GP FCL
 6,360pcs/40HQ FCL
Certificate: CE/GS/ROHS



**MODEL NO.: HKGK-3100DE
1.7L DIGITAL GLASS KETTLE**

Specification:
 - 230V~50Hz, 2300W
 - Electronic control with touch selection for 60 ~ 100°C
 - DURAN® (Schott Germany) glass receptacle
 - Concealed heating element
 - Stainless Steel Accents
 - Power on/off switch
 - Corded base with non-slip feet

Packing details:
 4 pcs / Carton
 1,482 pcs / 20ft FCL
 3,084pcs / 40ft FCL
Certificate: CE/GS/RoHS



**MODEL NO.: HKGK-3000
1.7L GLASS KETTLE**

Specification:
 - 230V~50Hz, 2300W
 - DURAN (Schott Germany) glass receptacle
 - Transparent glass kettle with glass window on the lid
 - Main body / lid and handle in plastic black PP
 - Power on/off switch with light indication
 - Kettle base wrapped with Stainless Steel (SUS304) Ring

Packing details:
 6 pcs / Carton
 1,782 pcs / 20ft FCL
 3,750 pcs / 40ft FCL
Certificate: CE/GS



**MODEL NO.: AX-001GL
LIQUID HEATER**

Specification:
 - 220-240V 50Hz 700W
 - Capacity: 1.0L
 - Dechlorination filter
 - Touchpad & FSD-SX
 - Automatic cooling system
 - Heat insulation for 24 hours when power on

Packing details:
 8pcs/ctn
 2,028pcs/20GP FCL
 4,057pcs/40GP FCL
 4,927pcs/40HQ FCL
Certificate: ON-GOING

STAINLESS STEEL WATER KETTLE



MODEL NO.: HK-SK1701
1.7L SS KETTLE

Specification:

- AC220-240V~50Hz, 2500-3000W
- Transparent S/S Kettle with glass windowed lid
- Power on/off switch with light indication
- Scale (screen) filter
- Using the quiet boil technology
- Boil dry protection

Packing details:

- 6 pcs / Carton
- 1,560 pcs / 20ft FCL
- 3,400 pcs / 40ft FCL

Certificate: CE/GS



MODEL NO.: HK-2615B
1.7L SS WATER KETTLE

Specification:

- AC220-240V 50*60Hz 1850-2200W
- Boutique SS Kettle
- Square kettle body & Base
- Pop up lid
- On/Off button with indicator light
- Conceal heating element

Packing details:

- 6pcs/carton
- 2,490 pcs / 20ft FCL
- 5,190pcs / 40ft FCL

Certificate: GS/CE/LFGB/ROHS



MODEL NO.: HK-794
1.7 WATER KETTLE

Specification:

- AC220-240V~50Hz, 1850-2200W
- 360 degree power base with anti-slip feet
- Stainless steel housing with rear water window
- On/off switch with indicator light
- Automatic/manual switch off
- Exclusive: Vietnam, Chile, Peru

Packing details:

- 8 pcs/carton
- 3,240 pcs / 20ft FCL
- 6,576 pcs / 40ft FCL

Certificate: GS/CE/ROHS



MODEL NO.: AX-1303FK
1.7L WATER KETTLE

Specification:

- 220-240V 50Hz 1850-2200W
- Capacity: 1.7L
- 202 Stainless Steel Body
- removable filter
- automatic on/off switch
- Boil-dry protection

Packing details:

- 6pcs/ctn
- 3,008pcs/20GP FCL
- 6,320pcs/40GP FCL
- 7,472pcs/40HQ FCL



MODEL NO.: AX-868YK
S/S WATER KETTLE

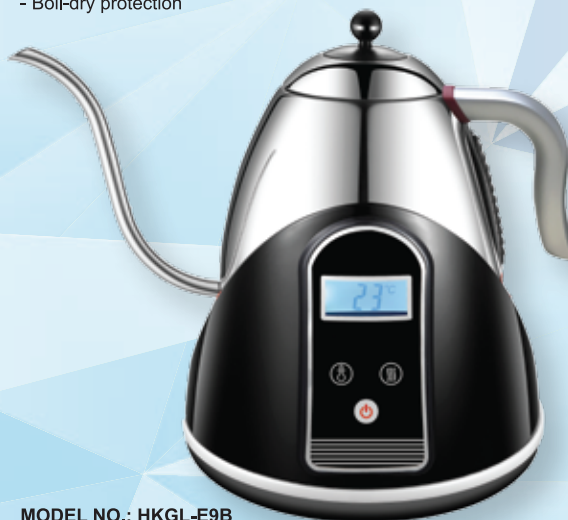
Specification:

- AC220-240V 50Hz 1850-2200W
- Capacity: 1.8L
- S304 Stainless Steel Body
- Concealed Heating Element
- Chrom Plated On / OFF Switch Edge with LED Indicator

Packing details:

- 6pcs/ctn
- 1,896pcs/20GP FCL
- 3,240pcs/40GP FCL
- 4,050pcs/40HQ FCL

Certificate: CE/GS/CB/ROHS



MODEL NO.: HKGL-E9B
0.8L SS KETTLE

Specification:

- AC220-240V~50Hz, 800-1000W
- Concealed S/S heating element
- Auto switch off
- Boil dry & overheat protections
- With 9 temperature preset function
- Gooseneck spout
- Keep warm function

Packing details:

- 12 pcs / Carton
- 2,376 pcs / 20ft FCL
- 4,668 pcs / 40ft FCL

Certificate: CE

ELECTRIC TOASTERS



**MODEL NO.: HK-TS31
4 SLICE TOASTER**

- Specification:
- AC220-240V~50Hz, 1400W
 - 2 slice long slot cool touch toaster
 - Multifunction (reheat, cancel, defrost)
 - Self-centering guides
 - Indicator light, variable electronic browning control
 - Auto pop up and auto shut off
 - Cord storage, Slide out crumb tray
 - Exclusive in USA

- Packing details:
- 4 pcs / Carton
 - 1,396 pcs / 20ft FCL
 - 2,896 pcs / 40ft FCL

Certificate: CE



**MODEL NO.: AX-3302YT
4 SLICE TOASTER**

- Specification:
- Power: 220-240V 50/60Hz 1300W
 - Two long Slot Four Slice S/S Top
 - Stop/Reheat/Defrost function with light indication.
 - Bread Anti-jam protection.

- Packing details:
- 6pcs/ Carton
 - 1,890pcs/20GP FCL
 - 3,900pcs/40GP FCL
 - 4,530pcs/40HQ FCL
- Certificate: CE/GS/ROHS/LFGB



**MODEL NO.: AX-3281YT
2 SLICE TOASTER**

- Specification:
- AC220-240V 50/60Hz 900w
 - One Long Slot Two Slice Plastic Toaster
 - Stand upright for compact storage
 - Stop/Reheat/Defrost function with light indication
 - Bread Anti-jam protection

- Packing details:
- 6pcs/carton
 - 2,400pcs / 20GPFCL
 - 4,920pcs / 40GPFCL
 - 5,760pcs / 40HQFCL

Certificate: GS/CE/LFGB/ROHS



**MODEL NO.: AX-6013TT
4 SLICE TOASTER**

- Specification:
- AC220V~240V, 50/60Hz, 1180-1400W
 - Stainless steel cover with anti-fingerprint oil
 - 3 LED indicator light
 - Bread Anti-jam protection.
 - Variable electronic timing control

- Packing details:
- 4pcs/carton
 - 1,116pcs/20GP FCL
 - 2,396pcs/40GP FCL
 - 2,876pcs/40HQ FCL

Certificate: CE/GS/LFGB



**MODEL NO.: HKGT-5022
2 SLICE GLASS TOASTER**

- Specification:
- AC220-240V 50Hz, 800W
 - Shade dial for 7 browning control setting
 - Illuminated buttons (defrost, reheat, cancel)
 - Anti jam function, auto shut off
 - Slide out crumb tray for easy cleaning
 - 38mm extra wide toasting slots

- Packing details:
- 4 pcs / Carton
 - 2,588 pcs / 20ft FCL
 - 5,468 pcs / 40ft FCL

Certificate: CB



**MODEL NO.: HKBM-5091
3 IN 1 BREAKFAST MAKER**

- Specification:
- AC220-240V 50Hz, 850W + 600W
 - Defrost, reheat, cancel function
 - Self-centering system
 - Anti jam function, auto shut off
 - 3 browning control setting
 - Transparent PC cover, boil egg tray, fried pan
 - 38mm wide and deep slot
 - Exclusive in USA

- Packing details:
- 2 pcs / Carton
 - 984 pcs / 20ft FCL
 - 2,028 pcs / 40ft FCL



Model No.: AX-780AS
3 in 1 detachable sandwich maker

Specificatin

- AC220-240V, 50/60HZ, 1200W
- 2 slice optional Plate: contact grill & sandwich & waffle plate
- Plate size: 27.8x14.6cm, 9.5mm in depth
- Non stick coating plate, Cool Touch handle
- Adjustable temperature control

Packing details:

- 4pcs/Carton
- 1,492pcs/20GP FCL
- 3,040pcs/40GP FCL
- 3,628pcs/40HQ FCL

Certificate: CE/GS/LFGB/ROHS



Model No.: HK-MG-01
MULTIFUNCTION GRILL

Specification:

- AC 110V-240V, 50-60Hz, 1200-1400W
- 180 OC WIGGLE OPEN SHAFT
- Detachable plate
- Suspended heating device
- High quality PET panel coating
- Touch control panel
- Grill/Flat/Waffle/Sandwich plate

Packing details:

- 4 pcs / Carton
- 1,172 pcs / 20ft FCL
- 2,492 pcs / 40ft FCL

Certificate: CE/ROHS



Model No.: AX-285JS
7 in 1 detachable sandwich maker

Specificatin

- AC110-240V, 50/60HZ, 1400W
- 4 slice optional plate: contact grill & sandwich & waffle & donuts & cookie & olive & samosa plate
- plate size: 22x28cm
- Non stick coating plate
- Stand upright for compact storage and space saving

Packing details:

- 2pcs/Carton
- 800pcs/20GP FCL
- 1,352pcs/40GP FCL
- 1,540pcs/40HQ FCL

Certificate: CE/GS/LFGB/ROHS



Model No.: HK-SM-311
SNACK MAKER

Specification:

- AC 220V-240V, 50-60Hz, 1000W
- PF housing
- Detachable plate
- Cool touch housing and handles
- Non-stick coated plate for easy cleaning
- With temperature adjustable
- Grill/Potato/Donut plate
- Exclusive in Japan

Packing details:

- 6 pcs / Carton
- 4,080 pcs / 20ft FCL
- 8,400 pcs / 40ft FCL

Certificate: CE



Model NoO.: HK-HDS-01
HOTDOG STEAMER

Specification:

- AC 220V-240V, 50-60Hz, 500W
- Make 4 buns and 8 sausages
- Auto thermost control
- Ready indication light
- Easy and fast for steaming food
- Exclusive in U.S.A.

Packing details:

- 6 pcs / Carton
- 2,964 pcs / 20ft FCL
- 6,204 pcs / 40ft FCL



Model No.: HK-SM-009
SNACK MAKER

Specification:

- AC 220V-240V, 50-60Hz, 700W
- Detachable non-stick coated plates
- Cool touch housing
- Working light for easy control
- Safety thermal cut-out and thermo fuse
- Turn-over for even baking
- Waffle cup/donut/shell cake/donut king plates

Packing details:

- 6 pcs / Carton
- 4,080 pcs / 20ft FCL
- 8,400 pcs / 40ft FCL

Certificate: CE/GS/LFGB/ROHS

MULTI COOKER



MODEL NO.: HK120/60JY
2 IN 1 ELECTRIC HOT POT

Specification:

- AC220V-240V, 50-60Hz, 1200W+600W
- Hot pot: 4L
- Two switches to control two heating plates.
- Steamboat & B.B.Q can be used at same time or solely- Adjustable temperature knob to control heating plate.
- Heavy non-stick coating cast aluminum Grill spread heat evenly

Packing details:

- 4 pcs / Carton
- 1,024 pcs / 20ft FCL
- 2,048 pcs / 40 ft FCL

Certificate: CE/CB



MODEL NO.: HK-MC-356A
MULTIFUNCTION COOKER

Specification:

- AC 220V-240V, 50-60Hz, 1200W
- Detachable plate
- With temperature control
- Cool touch housing and handles
- Non-stick coated plate for easy cleaning
- Flat/Grill/takoyaki/Muffin/Deep pot plate

Packing details:

- 3 pcs / Carton
- 735 pcs / 20ft FCL
- 1,575 pcs / 40ft FCL

Certificate: CE



MODEL NO.: AX-005KG
GRILL WITH HOT POT

Specification:

- AC220-240V 50/60Hz 2000W
- Inner pan: diameter 36cm, depth 6cm
- Die-cast aluminum pan body (4mm thickness edge)
- Detachable thermostat with power on indicator, Temperature adjustable knob with 5 levels
- Non-stick coating cooking surface for easy cleaning

Packing details:

- Carton: 51x49x82.5cm
- 6pcs / Carton
- 840pcs / 20ft FCL
- 1,700pcs / 40ft FCL

Certificate: LVD/EMC/CB



MODEL NO.: AX-06DB1500YG
MULTIFUNCTIONAL GRILL

Specification:

- AC220V 50Hz 1500W
- Structure: Base+Non-stick 280C tataren pan +middle stone+Non-stick 280C tataren grill (Dia:32cm)
- 6 non-stick small pans ((materials:carbon steel, 0.5mm thickness,Waipolon nonstick coating)
- Stainless steel (SUS430) bottom plate
- Plastic base housing
- With adjustable thermostat control and fuse
- Skid-proof rubber feet

Packing details:

- Carton: 61.7X33.5X34cm
- 2pcs / Carton
- 840pcs / 20ft FCL
- 1,680pcs / 40ft FCL

Certificate: CE/ROHS/GS/LFGB/REACH



MODEL NO.: HKHP-1852
ELECTRIC HOT POT

Specification:

- AC220V-240V, 50-60Hz, 1800W
- Hot pot: 5L
- Detachable 304 stainless steel pot to make clean easily.
- Scald-proof plastic handle, safe for use.
- Adjustable temperature control, freely meet your different cooking demands.
- Waterproof design, safe to use.
- Multiple cooking functions of hot pot, boiling water, cooking noodles, etc.

Packing details:

- 3 pcs / Carton
- 714 pcs / 20ft FCL
- 1,731 pcs / 40HQ

Certificate: CE



MODEL NO.: AX-017WG
3 IN 1 GRILL

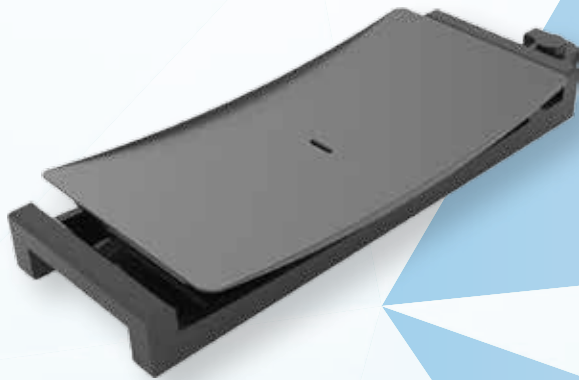
Specification:

- AC220-240V 50/60Hz 2000w
- Plate size: 58*27cm
- 2mm aluminum hot plate
- Non-stick coating
- Temperature adjustable knob
- Detachable thermostat
- S/s cool touch handle

Packing details:

- Carton: 72.5x33x50cm
- 4pcs / Carton
- 936pcs / 20ft FCL
- 1,920pcs / 40ft FCL

Certificate: EMC/LVD/ROHS/GS/LFGB/REACH



MODEL NO.: HK-LX103B
ELECTRIC TAPANYAKKI GRILL

- Specification:
- AC220V-240V, 50-60Hz, 1800W
 - Plate size:520*260mm
 - Plate Material: Cast aluminum + Nonstick coating
 - Unique design table top grill
 - Easy clean with oil drip tray.
 - Thermostat control and operation easy.

Packing details:
3 pcs / Carton
1,239 pcs / 20ft FCL
2,562 pcs / 40HQ

Certificate: CE



MODEL NO.: HK-SG-200
SMOKELESS GRILL

- Specification:
- AC 220V-240V, 50-60Hz, 1500W
 - High quality temperature resistance housing
 - Power/Fan/Temperature press key
 - Removable heat-insulation tray
 - Removable water collection oil tray
 - Long sucking fans motor
 - Exclusive in Japan, Korea & U.S.A.

Packing details:
3 pcs / Carton
650 pcs / 20ft FCL
1,340 pcs / 40ft FCL

Certificate: CE/GS



MODEL NO.: HK-WG-6307
BAMBOO GRILL

- Specification:
- AC 220V-240V, 50-60Hz, 1200W
 - Die-cast aluminium plate with non-stick coating
 - Detachable plate for easy cleaning
 - Slide-out drip tray
 - With cool touch housing made of bamboo
 - Detachable power cord with adjustable heat control

Packing details:
3 pcs / Carton
1,470 pcs / 20ft FCL
3,240 pcs / 40ft FCL



MODEL NO.: AX-112AG
DETACHABLE GRILL

- Specification:
- AC220V 50Hz 2000W
 - Plate size: 38*28.5cm
 - Non stick coating
 - Detachable design for easy cleaning
 - Adjustable temperature controller

Packing details:
Carton: 58.6X40X39cm
3pcs / Carton
906pcs / 20ft FCL
1,860pcs / 40ft FCL

Certificate: CE/ROHS/CB/GS/LFGB



MODEL NO.: AX-138BTHG
DETACHABLE PRESS GRILL

- Specification:
- AC220-240V 50/60Hz 2000W
 - 4-slice detachable grill plate
 - Plate size: 290*230mm
 - Non-stick coating plate for easy cleaning
 - Cool-touch safe handle, with timer for easy cooking
 - Open 180° as open grill
 - Adjustable temperature control knob
 - Brushed S/S top cover

Packing details:
Carton: 56.7x38.8x44.6cm
3pcs / Carton
900pcs / 20ft FCL
1,890pcs / 40ft FCL

Certificate: CE/ROHS/GS/REACH/LFGB



MODEL NO.: HK-KT1
VERTICAL GRILL

- Specification:
- AC220V-240V, 50-60Hz, 1600W
 - Reheat and Time Setting ,Variable electronic control
 - Cook Meals FASTER
 - Cook a variety of healthy, delicious meals with less fat and grease
 - Eat & Live HEALTHIER(Unwanted grease and fat drip away)
 - Prepare & Clean Up EASIER

Packing details:
3 pcs / Carton
797 pcs / 20ft FCL
1,679 pcs / 40HQ

Certificate: CE/GS

AIR FRYER



**MODEL NO.: HK-MC-6601
7L AIR FRYER**

- Specification:**
- AC 220V-240V, 50-60Hz, 1400W
 - Capacity: 4L for fry basket, 5.8L for oil pan
 - Temperature control from 80 ~ 2000°C
 - 60 mins. timer
 - BPA free transparent lids
 - Overheat protection system

- Packing details:**
- 1 pce / Carton
 - 546 pcs / 20ft FCL
 - 1,134 pcs / 40ft FCL

Certificate: CE/GS/CB/LFGB /ROHS/ETL/FDA



**MODEL NO.: AX-3008JF
AIR FRYER**

- Specification:**
- 220-240V, 50Hz, 1500W
 - Capacity: 4L
 - Non-stick food basket with LFGB&FDA
 - Healthy way for fry without oil and less fat
 - Double protection circuits
 - Non-slip feet

- Packing details:**
- 2pcs/carton
 - 550pcs/20GP FCL
 - 1,200pcs/40GP FCL
 - 1,400pcs/40HQ FCL

Certificate: Just applying



**MODEL NO.: AX-2008TS-CJF
AIR FRYER**

- Specification:**
- 220-240V, 50Hz, 1000W
 - Capacity: 1.6L
 - Double protection circuits; LCD display
 - LCD display
 - Non-slip feet

- Packing details:**
- 1pc/carton
 - 1,000pcs/20GP FCL
 - 2,100pcs/40GP FCL
 - 2,500pcs/40HQ FCL

Certificate: Just applying



**MODEL NO.: AX-09CYF
AIR FRYER**

- Specification:**
- 110-240V, 50/60Hz, 1350-1650W
 - Capacity: 4L
 - Digital touch screen, with preset programs
 - Non-stick coating
 - 4 circles of heating tube

- Packing details:**
- 2pcs/carton
 - 570pcs/20GP FCL
 - 1,180pcs/40GP FCL
 - 1,380pcs/40HQ FCL

Certificate: LFGB



**MODEL NO.: AX-1610RZF
AIR FRYER OVEN**

- Specification:**
- AC220-240V 50/60Hz, 1400-1600W
 - Rotation function for whole chicken, and rolling rage for popcorn
 - 9.5L inner chamber (Aluminum)
 - Digital screen touch Control.
 - Oil free for frying and toasting

- Packing details:**
- 1pc/carton
 - 480pcs/20GP FCL
 - 990pcs/40GP FCL
 - 1,188pcs/40HQ FCL

Certificate: CE/GS/ETL



**MODEL NO.: AX-1609RZF
AIR FRYER OVEN**

- Specification:**
- AC220-240V 50/60Hz, 1400-1600W
 - Rotation function for whole chicken
 - Rolling rage for popcorn
 - 9.5L inner chamber (Aluminum)
 - Mechanic Control

- Packing details:**
- 1pc/carton
 - 480pcs/20GP FCL
 - 990pcs/40GP FCL
 - 1,188pcs/40HQ FCL

Certificate: CE/GS/ETL